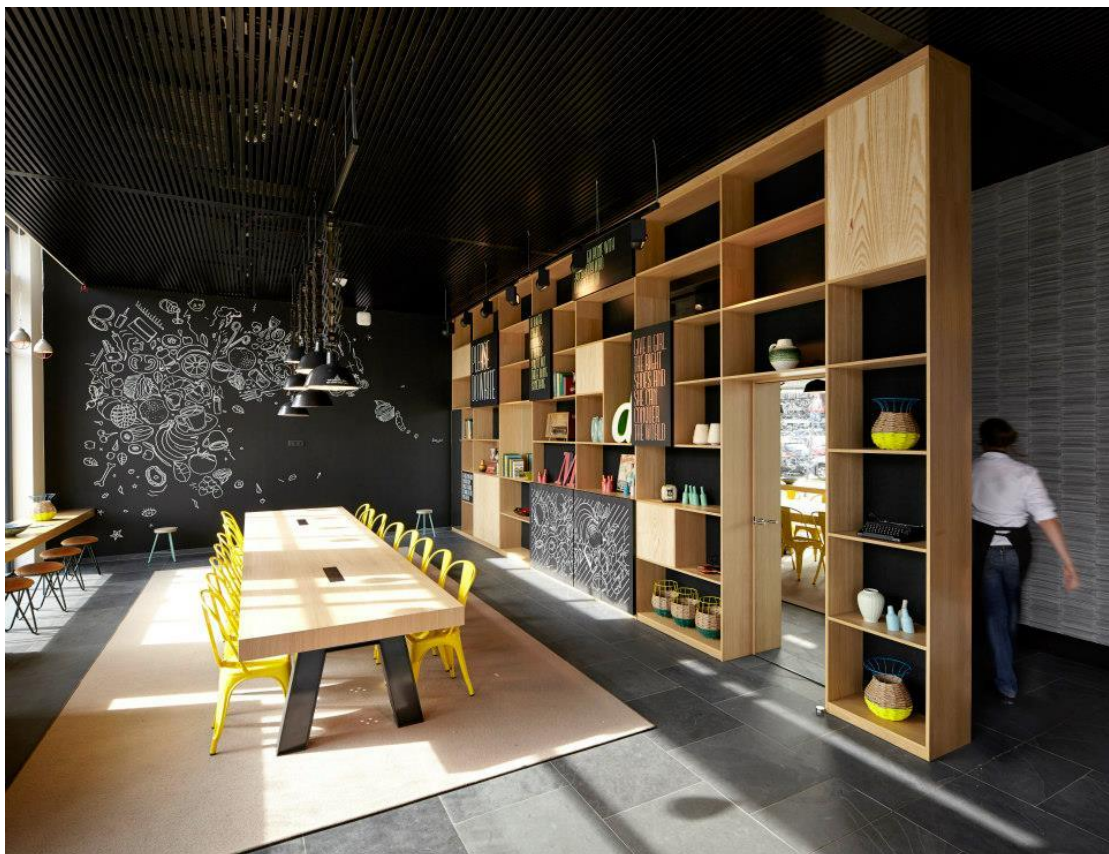


Bar Marie is a creative hub for employees of Sanoma media company as well as an inspirational venue for all your meetings and events. It's conveniently located, too: near Mechelen railway station and on the city's main approach road.

The space is divided into versatile 'zones' and stylishly furnished. Add to that a delicious breakfast or lunch with the emphasis on fresh produce and you have all the ingredients for a successful meeting.



## Meeting rooms

### General information

Number of rooms: 1

Max. number of people in largest room: 24

Max. number of people for catering (seated): 150

Max. number of people for receptions: 150

Closed on Saturday & Sunday

## Comfort



## Details

NAME	dimensions	theatre	U-shape	schoolstyle	cabaret style	banquet	reception	can be darkened	daylight	airco	wifi	wheelchair
Grote tafel Bar Marie	64 m <sup>2</sup>	-	24	-	-	-	-	✓	✓	✓	✓	
Bar Marie volledig	332 m <sup>2</sup>	-	-	-	-	84	150	✓	✓	✓	✓	

## Contact

T +32 498 12 56 34

(<https://meetin.mechelen.be/%E2%80%9Dtel:+32>)

@ [info@barmarie.be](mailto:info@barmarie.be) (<mailto:info@barmarie.be>)

W [www.barmarie.be](http://www.barmarie.be) (<http://www.barmarie.be/>)

## Location

Stationsstraat 55, 2800 Mechelen

Distance to Grote Markt: 1,4 km

Map



Leaflet (<https://leafletjs.com>)

